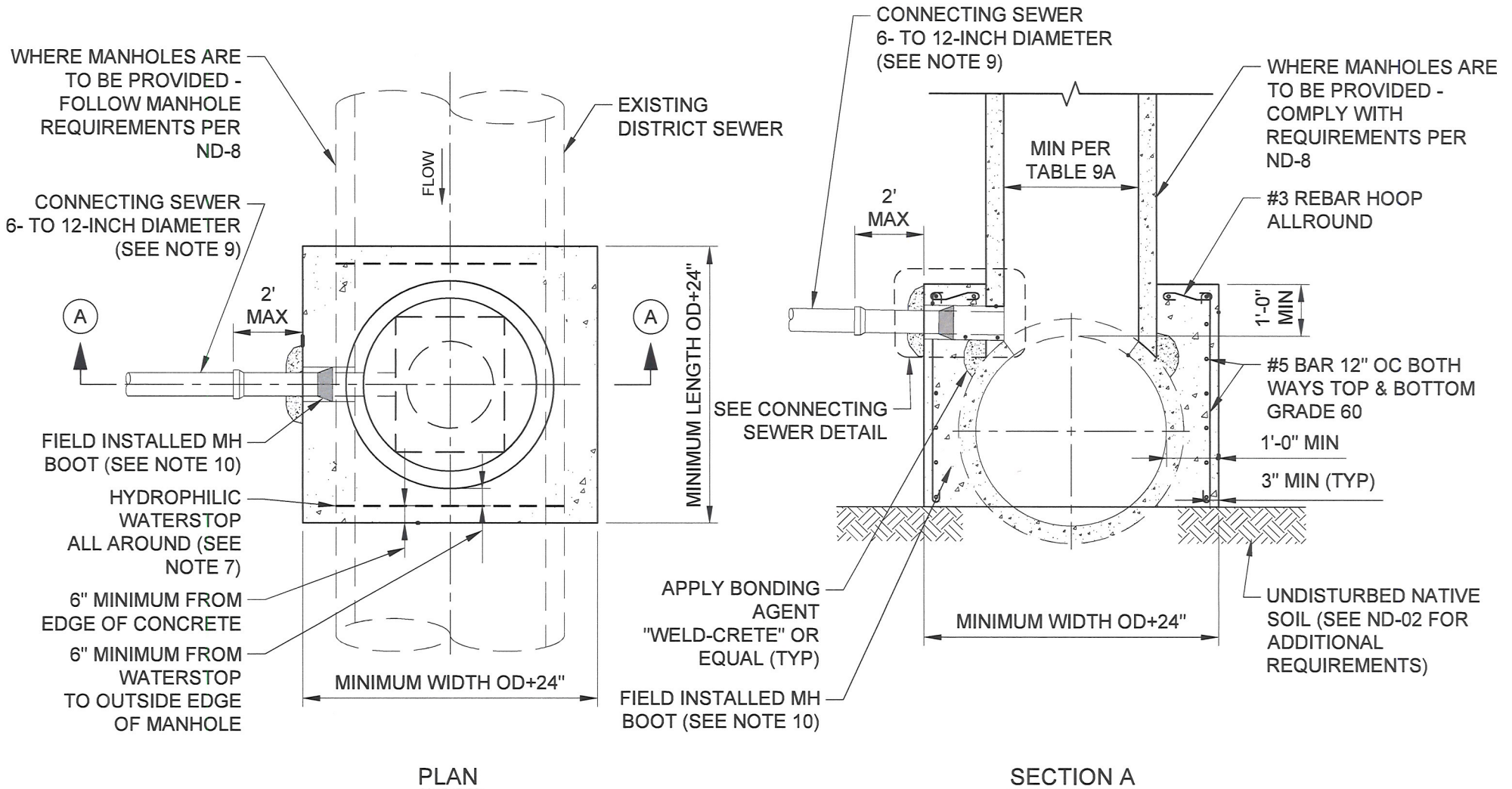


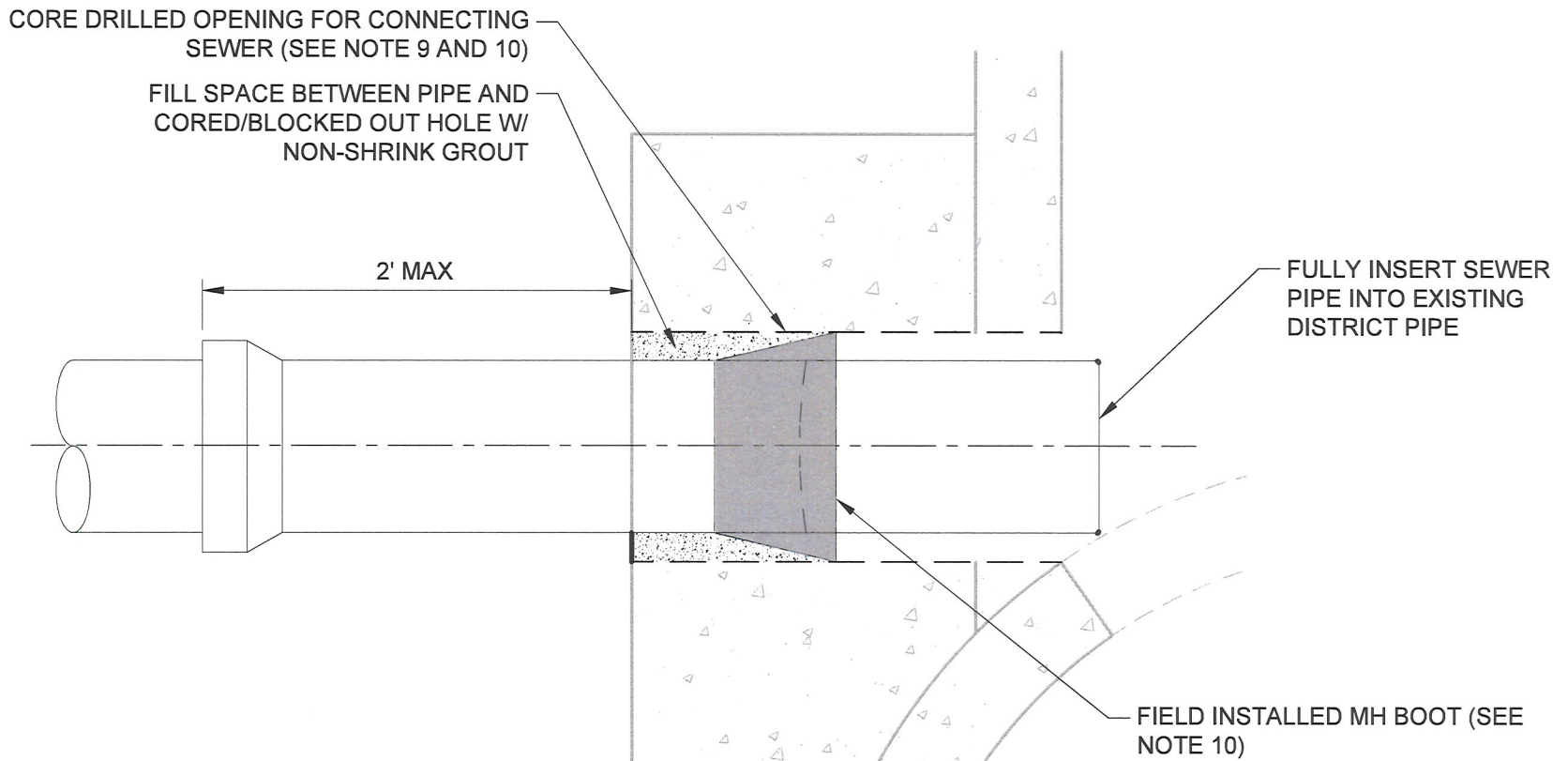
THIS STANDARD DRAWING SHALL BE USED FOR SETTING MANHOLES ON CONCRETE DISTRICT SEWERS WITH DIAMETERS 48" DIA OR LARGER WITH DISTRICT APPROVAL ONLY. THIS DETAIL SHALL NOT APPLY TO NEW DISTRICT SANITARY SEWER AND MANHOLE CONSTRUCTION.



NORTH DAVIS SEWER DISTRICT

# ND-09 Standard Concrete Manhole Modification Detail on 48" DIA Concrete Sewer or Larger 1 of 4

Adopted 6/13/2024



CONNECTING SEWER DETAIL



NORTH DAVIS SEWER DISTRICT

**ND-09 Standard Concrete Manhole Modification Detail on  
48" DIA Concrete Sewer or Larger 2 of 4**

Adopted 6/13/2024

**NOTES:**

1. CONTRACTOR MUST NOTIFY THE DISTRICT 48 HOURS BEFORE WORK BEGINS.
2. CONTRACTOR SHALL BE RESPONSIBLE FOR PROTECTION OF EXISTING SEWER AND OTHER UTILITIES, PROPER BACKFILLING, COMPACTING, AND SURFACE RESTORATION.
3. EXISTING DISTRICT SEWERS SHALL BE FULLY SUPPORTED AT ALL TIMES. CUT EXISTING SEWER TO NEAT STRAIGHT LINES WITH CUTTING TOOLS SUITABLE FOR THE PIPE MATERIAL. DAMAGED PIPE SHALL BE REPAIRED OR REPLACED AT NO ADDITIONAL COST TO THE DISTRICT.
4. WHERE DEPTH OF COVER OVER THE TOP OF PIPE EXCEEDS 10 FEET, REINFORCEMENT REQUIREMENTS SHALL BE REVIEWED AND VERIFIED BY A UTAH LICENSED CIVIL OR STRUCTURAL ENGINEER.
5. CONCRETE SHALL BE TYPE I/II PORTLAND CEMENT PER ASTM C150 WITH A MINIMUM COMPRESSIVE STRENGTH OF 4000 PSI PER ASTM C39. NO ADDITIVES SHALL BE PERMITTED WITHOUT PRIOR APPROVAL BY THE DISTRICT. ENCASEMENT SHALL BE CAST IN A SINGLE POUR.
6. WHERE EXISTING DISTRICT PIPES HAVE BEEN REHABILITATED WITH CURED-IN-PLACE PIPE LINERS, CIPP LINERS SHALL BE CUT AND THE CIPP LINER ROUGHENED AND SEALED WITH AN EPOXY COATING AND SECURED BY AN END SEAL APPROVED BY THE DISTRICT.
7. HYDROPHILIC WATERSTOPS MUST BE PROVIDED BETWEEN THE PIPE AND CAST CONCRETE, BOTH SIDES, ALL AROUND (GREENSTREAK HYDROTITE OR APPROVED EQUAL). CLEAN PIPE USING WIRE BRUSH, POWER WASH, OR SAND BLAST TO PROVIDE A CLEAN, DURABLE SURFACE. SECURE WATERSTOP TO PIPE USING MANUFACTURER'S RECOMMENDED METHODS. APPLY LAYER OF GREENSTREAK LEAKMASTER OR APPROVED EQUAL BETWEEN WATERSTOP AND PIPE.
8. SEE ND-06 FOR ACCEPTANCE TESTING, FINAL COMPLETION, AND WARRANTY REQUIREMENTS.
9. INVERT OF CONNECTING SEWER TO BE APPROVED BY THE DISTRICT PRIOR TO CONSTRUCTION OF SEWER.
10. PROVIDE FLEXIBLE, WATER-TIGHT BOOTED PIPE CONNECTION MEETING THE REQUIREMENTS OF ASTM C923 AND ACCEPTED BY THE DISTRICT. CONTRACTOR TO ENSURE CORE DRILLED OPENING IS PROPERLY SIZED FOR BOOT.



TABLE 9A ND-09			
DISTRICT SEWER NOMINAL DIA (IN)	MANHOLE NOMINAL DIA (IN)	MIN ENCASEMENT WIDTH (IN)	MIN ENCASEMENT LENGTH (IN)
<48	PER ND-03	N/A	N/A
54	60	90	90
60	72	96	102
66	72	104	102
72	72	110	102
78	72	118	102
84	84	124	116



NORTH DAVIS SEWER DISTRICT

**ND-09 Standard Concrete Manhole Modification Detail on  
48" DIA Concrete Sewer or Larger 4 of 4**

Adopted 6/13/2024